

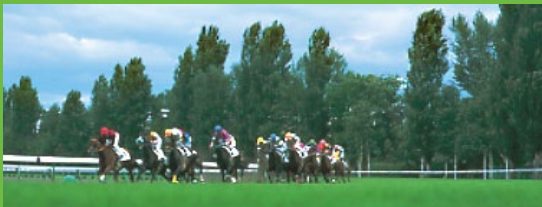


Sapporo Racecourse offers beautiful greenery, exciting thoroughbred horseracing, and a comfortable racing environment throughout the year.

The racecourse is just a single stop from Sapporo Station, the largest terminal in Hokkaido. Located in Sapporo's urban area, this is the most northernmost racecourse in Japan.

Ezo pine trees, poplar and other greenery found only in Hokkaido have been planted at various points within the facility, while the grandstand provides a sense of freedom with its spacious design.

The "Moiwa Terrace" offers a chance to fully enjoy Hokkaido's pleasant summer weather, while the "Makiba Garden" allows fans to interact with horses in a beautiful, natural setting. Please enjoy the various facets of Sapporo Racecourse.



Moiwa Terrace

Named after "Mount Moiwa" that overlooks the city of Sapporo, the "Moiwa Terrace" is the perfect spot to enjoy the thrills of racing and the beautiful scenery at the same time.

Sapporo Racecourse Area Guide

Sapporo Clock Tower

Sapporo Clock Tower was built in October 1878 as a theatrical hall within the compounds of the Sapporo Agricultural College, the predecessor of Hokkaido University. It is now a museum displaying panels of the Tower's history as well as similar clock mechanisms.



Odori Park

An urban oasis stretching 1.5km from east to west. The whole park is transformed into a beer garden during the annual summer festival.

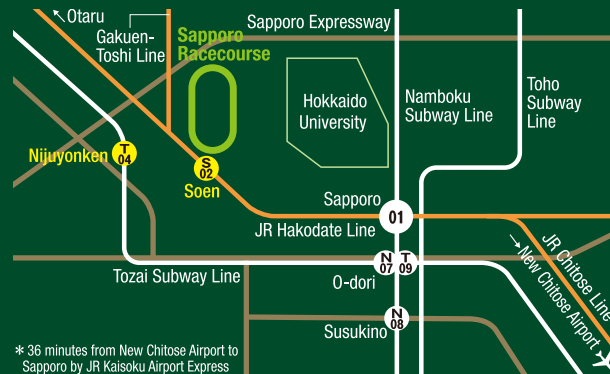
Mount Moiwa

From its peak at 531 meters above sea level, Mount Moiwa offers a panoramic view of Sapporo, stretching as far as Ishikari Bay in the Sea of Japan and Mount Shokanbetsu in Mashike. Because Mount Moiwa is also visible to the south from Sapporo Racecourse, the rooftop terrace with a peerless view is named "Moiwa Terrace."



Sapporo Central wholesale Market

Fresh food stocked directly from the adjacent Central Wholesale Market are available at very reasonable prices. This is the place to buy upmarket foods without spending a fortune.



* 36 minutes from New Chitose Airport to Sapporo by JR Kaisoku Airport Express

JRA Sapporo Racecourse
<http://japanracing.jp/>

(Access) 10 minutes walk from JR Soen Station
 15 minutes walk from Nijuyonken Station on the Sapporo Municipal Subway Tozai Line
 * Free shuttle bus from JR Soen Station and Nijuyonken Subway Station on race days
 (Admission) 100 yen (free for anyone under 15)
 (Gates open) 09:00 (subject to change depending on congestion levels, etc.)



SAPPORO RACECOURSE

Come and experience the excitement of a lifetime!



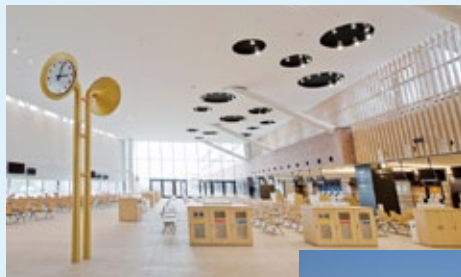
TURFY & HELLO KITTY
 © 76,03/14 SANRIO CO., LTD. ©



Sapporo's new must-visit – a comfortable space in harmony with nature, where everyone can have fun – that's Sapporo Racecourse.

Grandstand

With its spacious design, the Grandstand is filled with attractive spots.



Fanfare Hall

This roomy area with high ceilings lets in shafts of soft natural light, giving a comfortable environment – cool in the summer, but warm in the winter season – for racegoers.

Betting Machines

Automatic betting machines make betting purchases and payouts quick and simple.

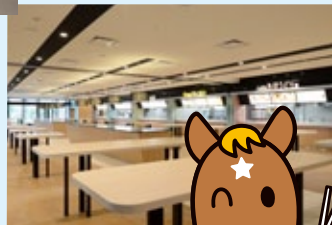


Moiwa Terrace

A long, rooftop terrace (total length 120 meters) offers a fantastic view of Mount Moiwa and the entire racecourse.

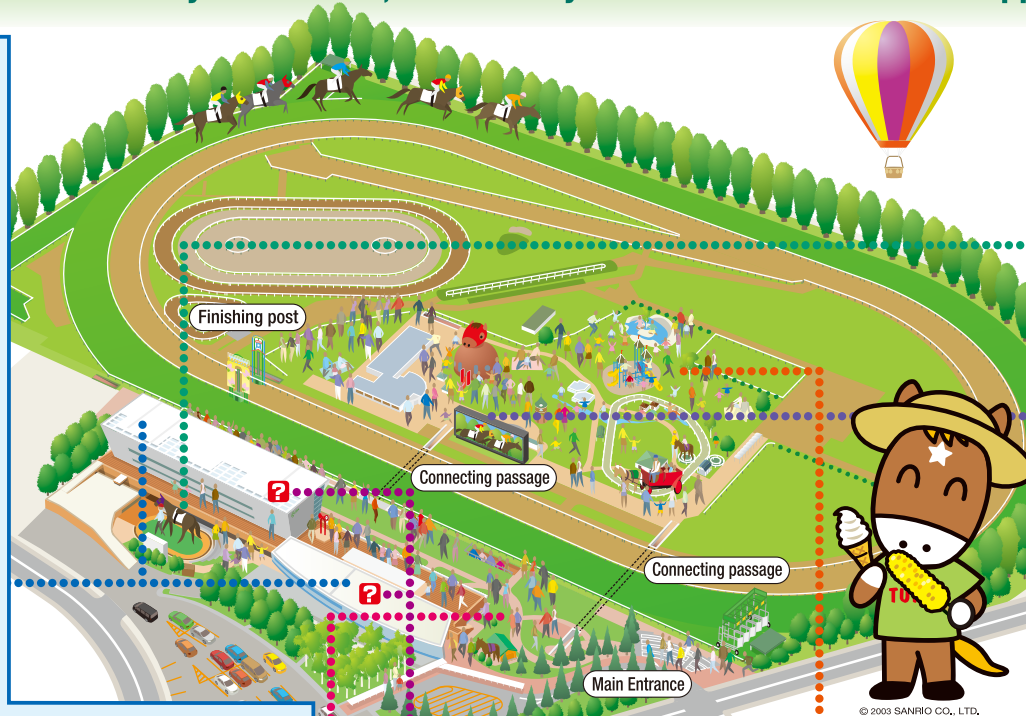
Kids Land

Secure playground for families with kids. Kids Land is designed with the image of a racecourse.



Food Court

Offers a rich variety of delicious food, from standard menus to Hokkaido's local dishes.

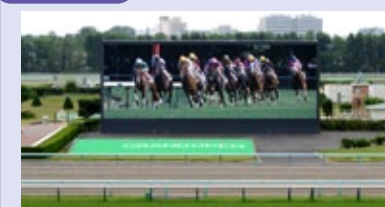


Parade Ring



Check the condition and mood of the runners at close quarters! Also visible from each floor of the stand. The dugout paddock is recommended for viewing the horses from a different angle.

Turf Vision



When the action is far away, check it out on Turf Vision! As well as race footage, the screens show scenes from the Parade Ring, odds board, payouts and various other information.

Information



Come straight here if there's anything you want to know! At the information desks, you will find guide maps of the stand as well as betting guides in various languages (English, Chinese, Korean).

Location Stand 1F, 2F, 3F

Infield Playground

An amusement park for all the family

Inside the track is a playground where children can wile away the day in enjoyable activities. Full of play areas and fun attractions with horses. Various events are held on the open-air stage.

Adventure Island



Jabu-Jabu Pond



Paka-Paka Dome

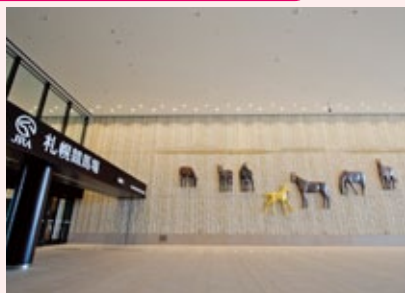


Horse rides



Carriage rides

Facilities around the Grandstand



Entrance

The main entrance, with high roofs and spacious design, welcomes the visitors to the racecourse. The leading path to the main entrance is surrounded by lush greenery and trees.

Turf Side Seats

Seats along the outside rails of the final stretch provides an up-close view and vibrant, dynamic sounds of the horses competing head to head in their last spurt for the post.



Makiba Garden

Surrounded by flowers and greenery, the Makiba Garden – designed with the image of a pasture – provides an opportunity for fans and kids to interact with riding horses and ponies. Hokkaido native horses, known as "Dosanko," can also be seen in this garden.



Major races held at Sapporo Racecourse

(As of July 1st, 2014.)



Sapporo Kinen

Elm Stakes (G3)	1,700m/Dirt/3yo and up
Queen Stakes (G3)	1,800m/Turf/fillies & Mares 3yo and up
Sapporo Kinen (G2)	2,000m/Turf/3yo and up
Keeneland Cup (G3)	1,200m/Turf/3yo and up
Sapporo Nisai Stakes (G3)	1,800m/Turf/2yo